



The Great American Outdoors Act:
The impact on America's State Parks.



A closer look:
**The Great American
Outdoors Act
(GAOA)**



How we got here.

- John D. Dingle Conservation, Management And Rec. Act of 2019
- Great American Outdoors Act (GAOA)

The John D. Dingell Jr. Conservation, Management, and Recreation Act of 2019

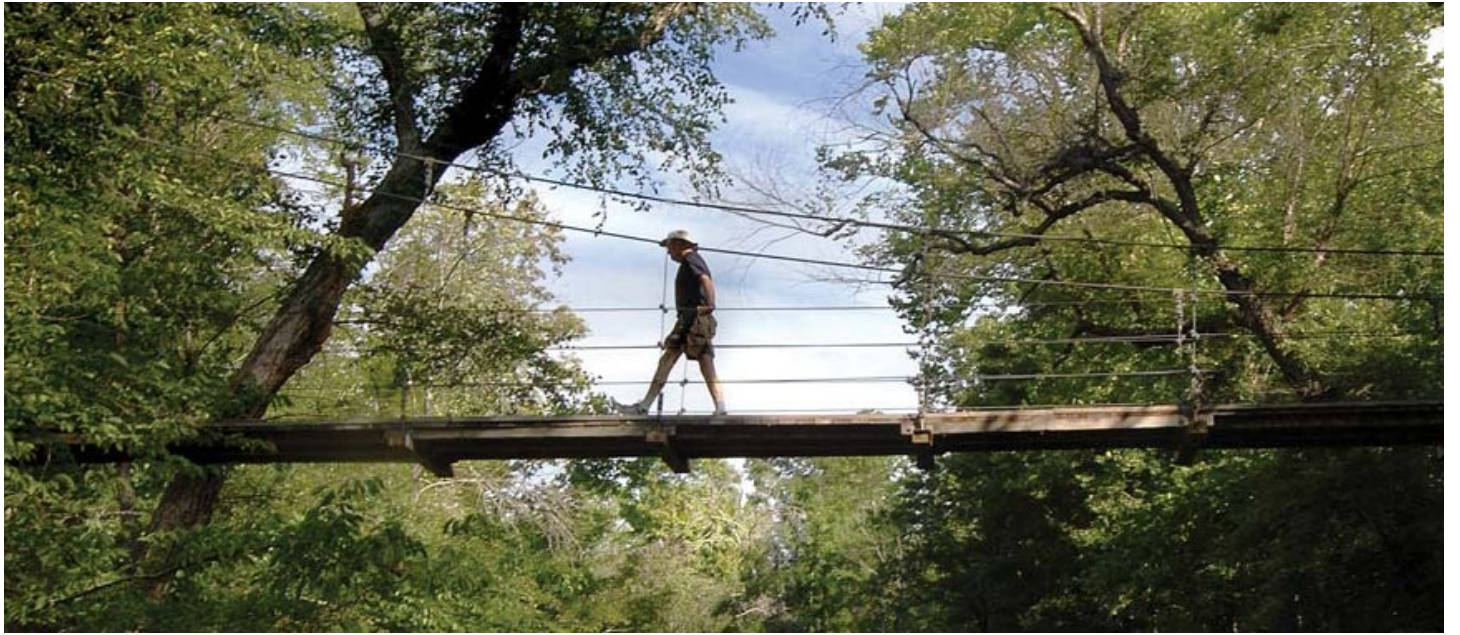
- ... protected public lands and modified management provisions, **provided permanent reauthorization of LWCF.**
- Requires 40% of LWCF for State Assistance. *a percent for state assistance restored after 43 years!
- Senate votes of 92-8 and House 363-62 confirmed incredible bipartisan support.





Great American Outdoors Act

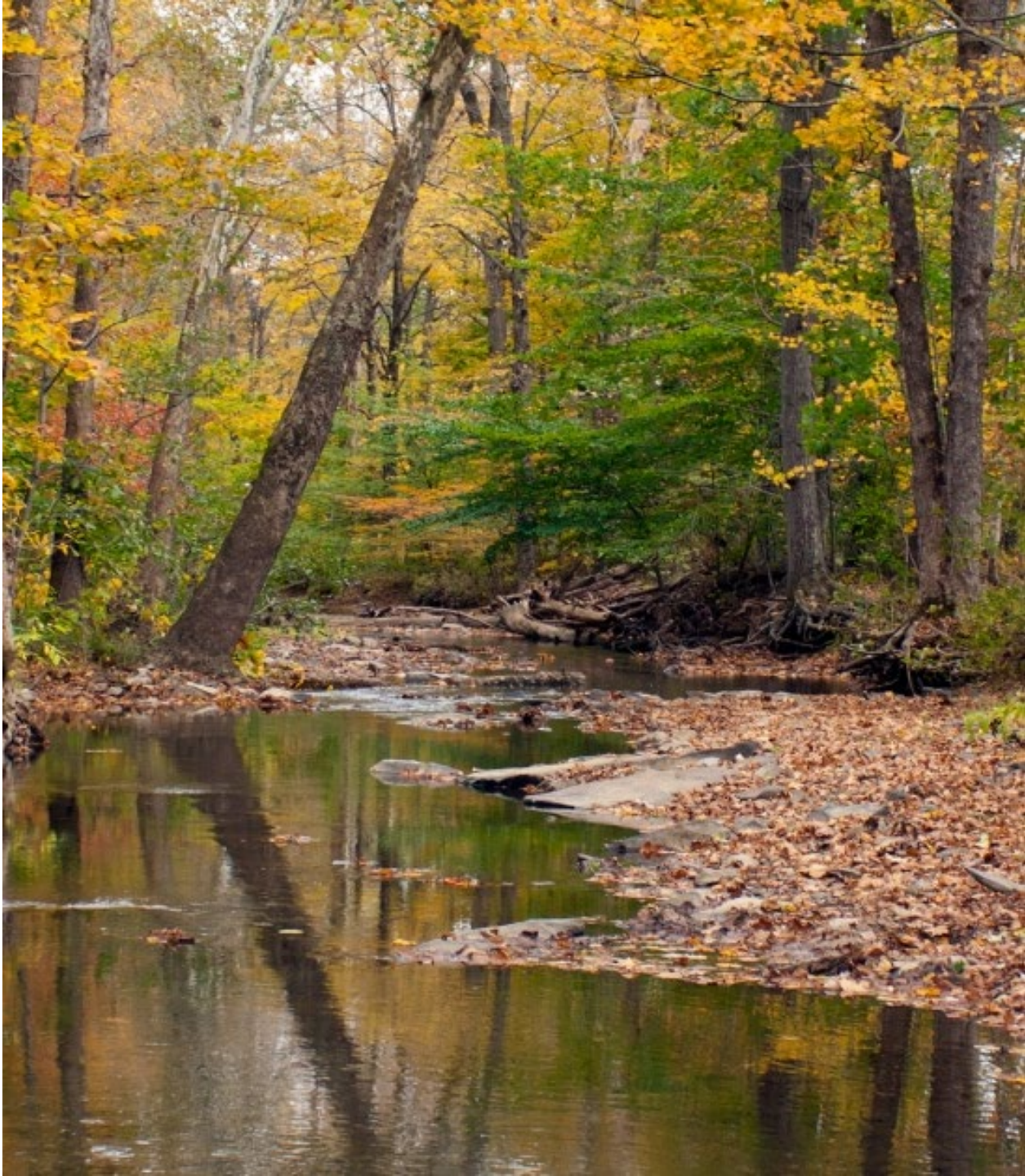
- On June 17, the Senate voted to approve the **Great American Outdoors Act** (S. 3422) by a 75-23 margin. Provisions include **permanent dedicated and mandatory funding for Land and Water Conservation Fund (LWCF)** at the authorized amount of \$900 million annually. The program will help national parks, state parks, local parks, public lands, and athletic fields in every county across the country.
- In addition, the bill creates a new fund (\$1.9 billion annually for five years) to address deferred maintenance projects at the National Park Service, Forest Service, U.S. Fish and Wildlife Service, Bureau of Land Management, and Bureau of Indian Education schools.



How does the Great American
Outdoors Act effect the LWCF?

LWCF Overview

- Became Effective January 1, 1965
- Primarily Funded with Offshore drilling royalties
- Authorized at \$900 million/year
 - As enacted law required 60% for states, 1970's that guarantee was removed
 - Dingell Act – 40% recommended for states
 - 60% goes to Federal & other programs considered eligible for LWCF programs (Battlefields, Forest Legacy, Highlands, Endangered Species)
 - Additional dedicated fund for state LWCF, Gulf of Mexico Energy Security Act (GOMESA) , up to a maximum of \$125 million.
 - Historically funding for states has been very low – GAOA will change this!
 - **Only 25% since 1965; and less than 19% over last ten years**
 - *Note: there is also a “federal side” to LWCF*





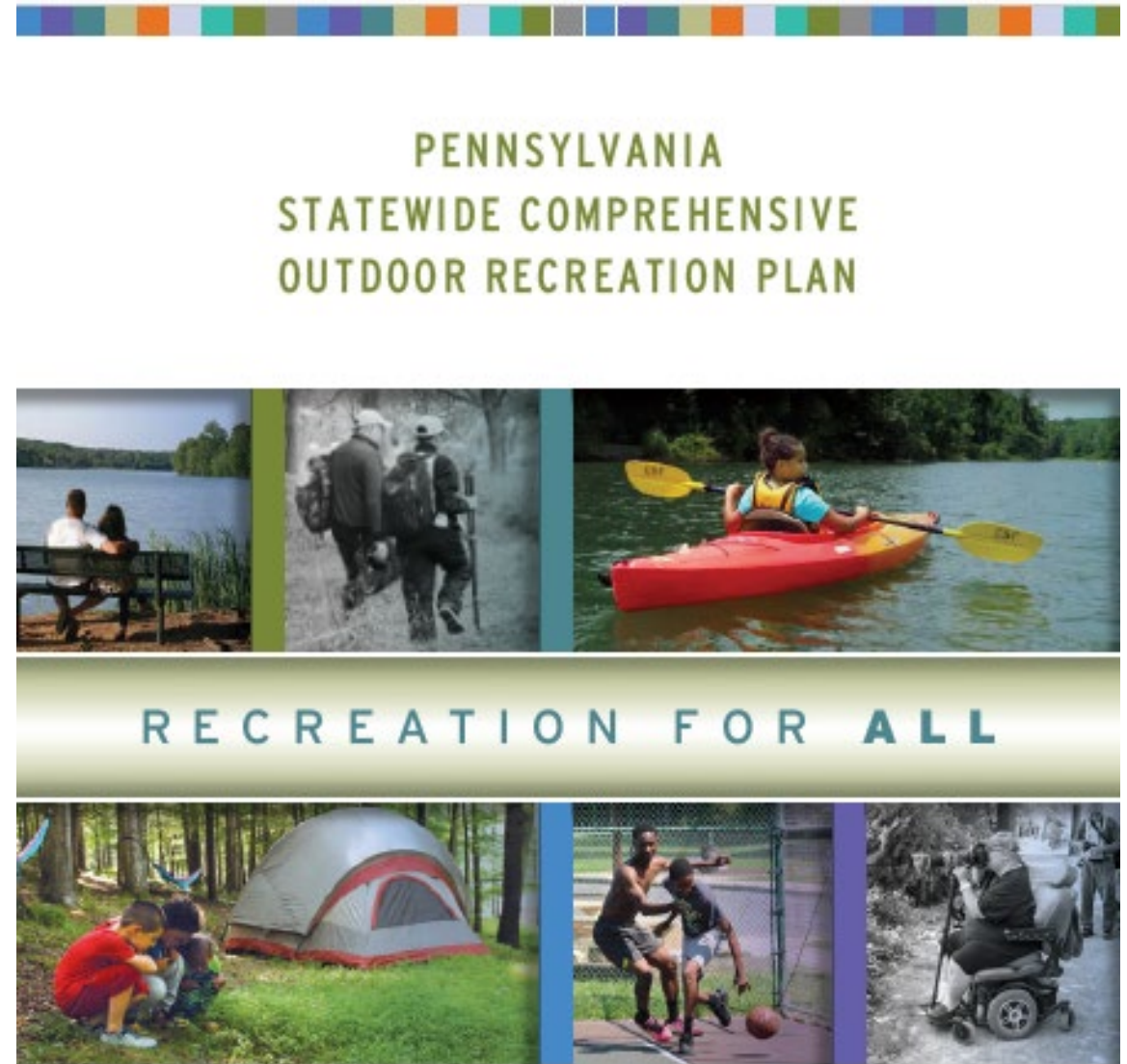
LWCF Details

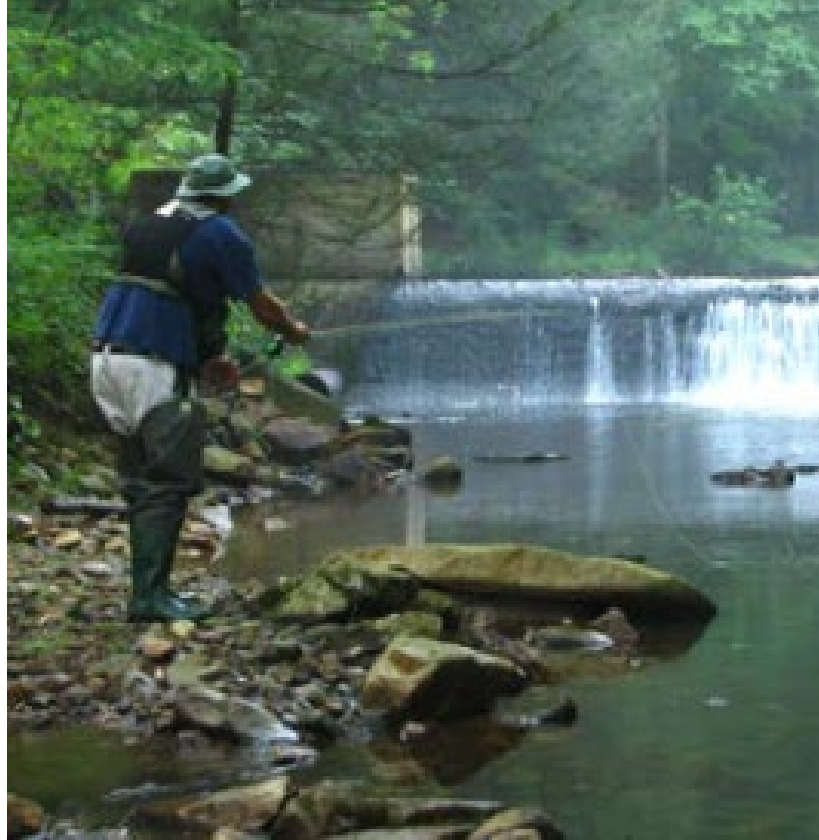
- Who administers it...
- Who administers it in my state...
- Just how much money is available for my state...
- What are the rules, matching options, etc...



State & Local Assistance

- Managed in each state by Governor appointed State Liaison Officers or by state statute
- Funding allocated to each state by formula
- States required to do planning every 5 years
- Open Project Selection Process Required with a minimum 50% non-federal match. Over 46,000 projects, totaling \$8 billion have been completed
- National network of perpetually protected park lands






Types of Projects:

- Land Acquisition
- Development
- Acquisition/Development
- Major Rehabilitation and/or renovation

*Eligible Entities: State/subunits of governments



Program Requirements

- One-to-one match
- Permanently Open to the public without discrimination
- On-going maintenance, operation and assurance of public access is responsibility of state and local grantees and assurances of perpetual public access.
- State required to conduct 5-year inspections



U.S. DEPARTMENT OF THE INTERIOR
NATIONAL PARK SERVICE

LAND AND WATER CONSERVATION FUND
STATE ASSISTANCE PROGRAM



FEDERAL FINANCIAL ASSISTANCE MANUAL
Volume 71

Effective March 11, 2021

Controlling Documents

- State Outdoor Recreation Plan (SORP)
- Grant Manuals
 - Federal & State
- Grant Agreements
 - Federal & State
 - Strings attached
 - Federal Assurances
 - Grant App Package
 - LWCF Project Agreement

Permanent Protection

6 (F) and what that means...



LAND AND WATER CONSERVATION FUND
STATE ASSISTANCE PROGRAM



Chapter 8: Post Competition and Stewardship

- Operation and Maintenance
- Post completions Inspections
- Availability to users
- Leasing and Concessions
- Conversion
- Underground Utilities
- Commercial signage
- Proposals to Construct a Public Facility
- Temp Non-Conforming Use
- Obsolete Facilities
- Significant Change of Use



AMERICA'S
STATE
PARKS

Securing the funding: *The work continues.*

For more information and additional resources:



Linda Lanterman KS, Past President

linda.lanterman@ks.gov

Doug Eiken, Executive Director

nasorlo@gmail.com

Eric Feldbaum NH, Vice President

Eric.M.Feldbaum@dncr.nh.gov

To apply for LWCF, or to find your SLO and the agency administering LWCF in your state, go to:

<https://www.nasorlo.org/nasorlo-member-list-2020-state-liaison-officers-slos-and-alternates/>



The Great American Outdoors Act

Questions???

AMERICA'S
**STATE
PARKS**





Phil Gaines
spgaine@clermson.edu